

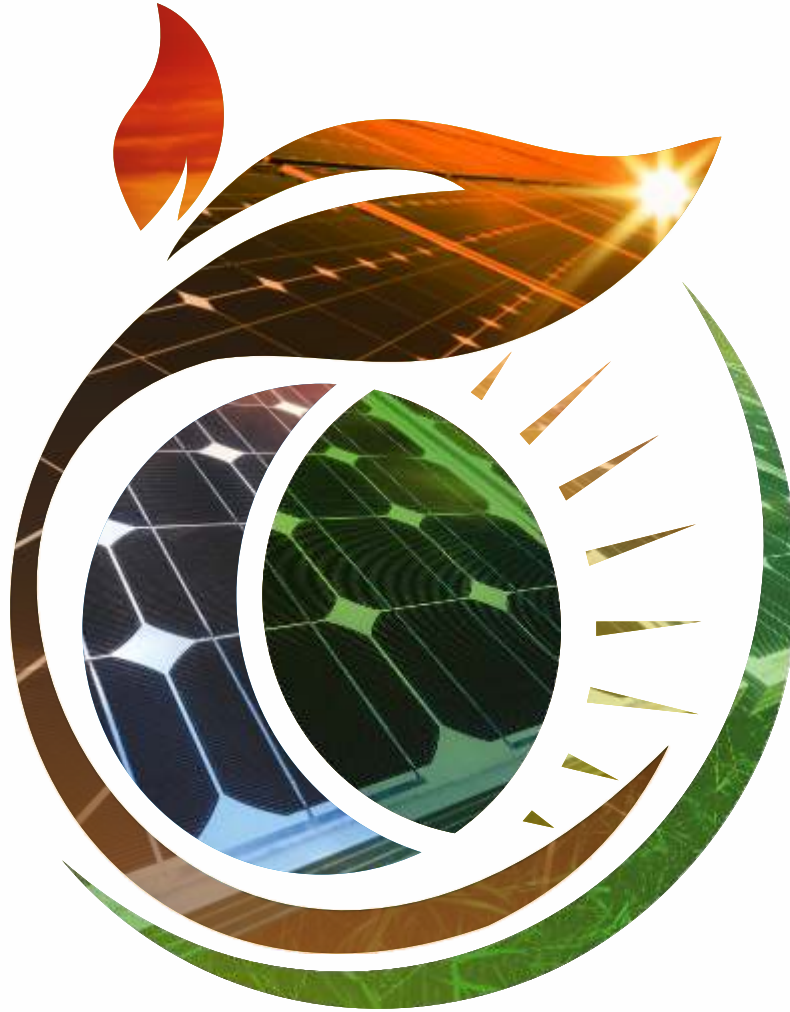
SBB POLY CRYSTALLINE SOLAR PV MODULES



PATANJALI

Anant Urja Srot...

www.patanjalirenewable.com



- EXTREMELY **RELIABLE PRODUCT** SUITING ALL ENVIRONMENT CONDITIONS
- **100% EL TESTED** TO ENSURE DEFECT FREE MODULES
- CERTIFIED FOR **PID RESISTANCE**
- CERTIFIED FOR **SALT MIST CORROSION RESISTANCE**
- SUPERIOR **LOW LIGHT** IRRADIATION PERFORMANCE 200W/m²
- **POSITIVE** GUARANTEED TOLERANCE

APPLICATIONS

- Solar pumping applications
- Off grid residential systems
- On-grid rooftop residential, commercial and industrial roof top installations

TECHNICAL DATA

POLY 60 CELLS MODULE SERIES

Electrical Data All Data refers to STC (AM 1.5, 1000 W/m², 25°C)

Sl. No.	MODEL	PREL 250W	PREL 255W	PREL 260W	PREL 265W	PREL 270W	PREL 275W
1	Peak power, (0' + 4.99 Wp) Pmax (Wp)	250	255	260	265	270	275
2	Maximum voltage, Vmpp (V)	30.59	30.81	31.11	31.41	31.71	31.83
3	Maximum current, Imp (A)	8.19	8.29	8.38	8.45	8.53	8.64
4	Open Circuit Voltage, Voc (V)	37.46	38.01	38.11	38.61	38.81	38.50
5	Short circuit current, Isc (A)	8.71	8.93	8.99	9.04	9.1	9.22
6	Module efficiency (%)	15.83	16.15	16.46	16.78	17.10	17.41

*STC : Irradiance 1000 W/m², cell temperature 25°C, air mass AM1.5 according to EN 60904-3, Average efficiency reduction of 5% at 200 W/m² according to EN 60904-1.

Electrical Parameters at NOCT

Power (Wp) at NOCT	184.40	188.20	191.50	195.80	199.10	200.70
V@Pmax(V) at NOCT	27.32	27.66	27.71	28.01	28.08	28.10
I@Pmax (A) at NOCT	6.75	6.83	6.91	6.99	7.09	7.15
Voc (V) at NOCT	34.75	34.88	34.92	35.08	35.10	35.70
Isc (A) at NOCT	7.23	7.30	7.37	7.45	7.52	7.62

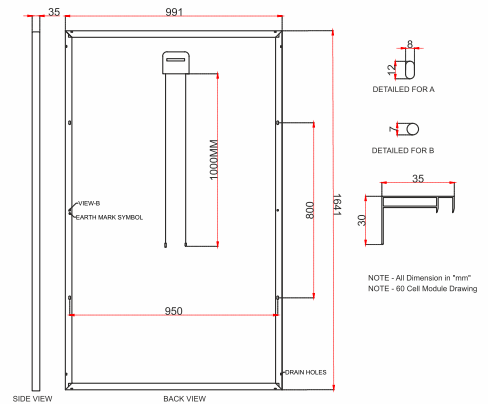
NOCT irradiance 800 W/m², ambient temperature 20°C, wind speed 1 m/sec

Temperature co-efficients (TC) permissible operating conditions

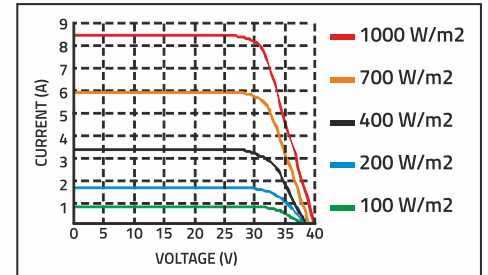
TC of open circuit voltage (β)	-0.29 % /°C
TC of short circuit current (α)	-0.057 % /°C
TC of power (γ)	-0.38 % /°C
Maximum system voltage	1000/1500 V
NOCT	46°C ± 2°C
Temperature range	-40°C to + 85°C

Mechanical Data

Length x Width x Height	1641 x 991 x 35 mm
Weight	18 kg ± 0.500 kg
Junction Box	IP67 / IP68 3 Bypass diodes
Cable & Connectors	1000mm/1200mm length cables & MC4 Connectors
Application Class	Class A (Safety Class II)
Superstrate	High transmittance ARC Glass
Cells	60 Polycrystalline solar cells
Cell Encapsulant	EVA (Ethylene Vinyl Acetate)
Back Sheet	Composite Film
Frame	Anodized aluminium frame with twin wall profile
Mechanical Load Test	5400 pa-front ; 2400 pa-back
Maximum Series Fuse Rating	15 A



Typical I-V Curves



Warranty and Certifications

Product Warranty**	10 years
Performance Warranty**	Linear Power Warranty for 25 year with 2.5% for 1st year degradation and 0.67% from year 2 to year 25
Approvals and certificates :	IEC 61215, IEC 61730, IEC 61701, IEC 62804, IS14286, IS61730

* Module Efficiency as per Aperture area

** Refer to PATANJALI RENEWABLE ENERGY'S warranty document for terms and conditions.

CAUTION : READ SAFETY AND INSTALLATION MANUAL BEFORE USING THE PRODUCT.

specifications included in this datasheet are subject to change without notice. Electrical data without guarantee. Please confirm your exact requirement with the company representative while placing your order.

PREL/ENG/TDS/03-Rev. 01

TDS-5BB-Poly-60 Cells

Packaging Information

Qty.: 25 in 1 Box

Qty.: 02 in 1 Box



Patanjali Renewable Energy Pvt. Ltd.

D-83-84-85, EPIP, UPSIDC, SITE-V, Kasna, Greater Noida, UP 201310.

Customer Care No. +91-971-160-6006

E-mail : info@patanjali-renewable.com | www.patanjalirenewable.com

Like Follow & Subscribe / PatanjaliSolar